



# Dunedin Methodist Parish

*Finding Good in everyone      Finding God in everyone*

[www.dunedinmethodist.org.nz](http://www.dunedinmethodist.org.nz)

Find us on Facebook: Dunedin Methodist Parish

<b>Presbyters:</b>	Rev. Siosifa Pole	455 2923
	Rev. Dr. Rod Mitchell	477 3700
<b>Parish Stewards:</b>	Mrs Hilda Hughson	487 6226
	Mrs Earlene Owens	489 8146
	Dale Meredith	467 2070
<b>Tongan Steward:</b>	Mr Kaufusi Pole	455 0096
<b>Parish Office:</b>	Siosifa: <a href="mailto:parish@mmsouth.org.nz">parish@mmsouth.org.nz</a>	466 4600
	Katrina: <a href="mailto:admin@mmsouth.org.nz">admin@mmsouth.org.nz</a>	
<b>Parish Prayer Convenor</b>	Elaine Merrett: <a href="mailto:elaineross@xtra.co.nz">elaineross@xtra.co.nz</a>	489 7663
<b>Pastoral Convenor</b>	Beryl Neutze	476 7447
<b>Mornington:</b>		

## PARISH BULLETIN

10<sup>th</sup> Sep 2017

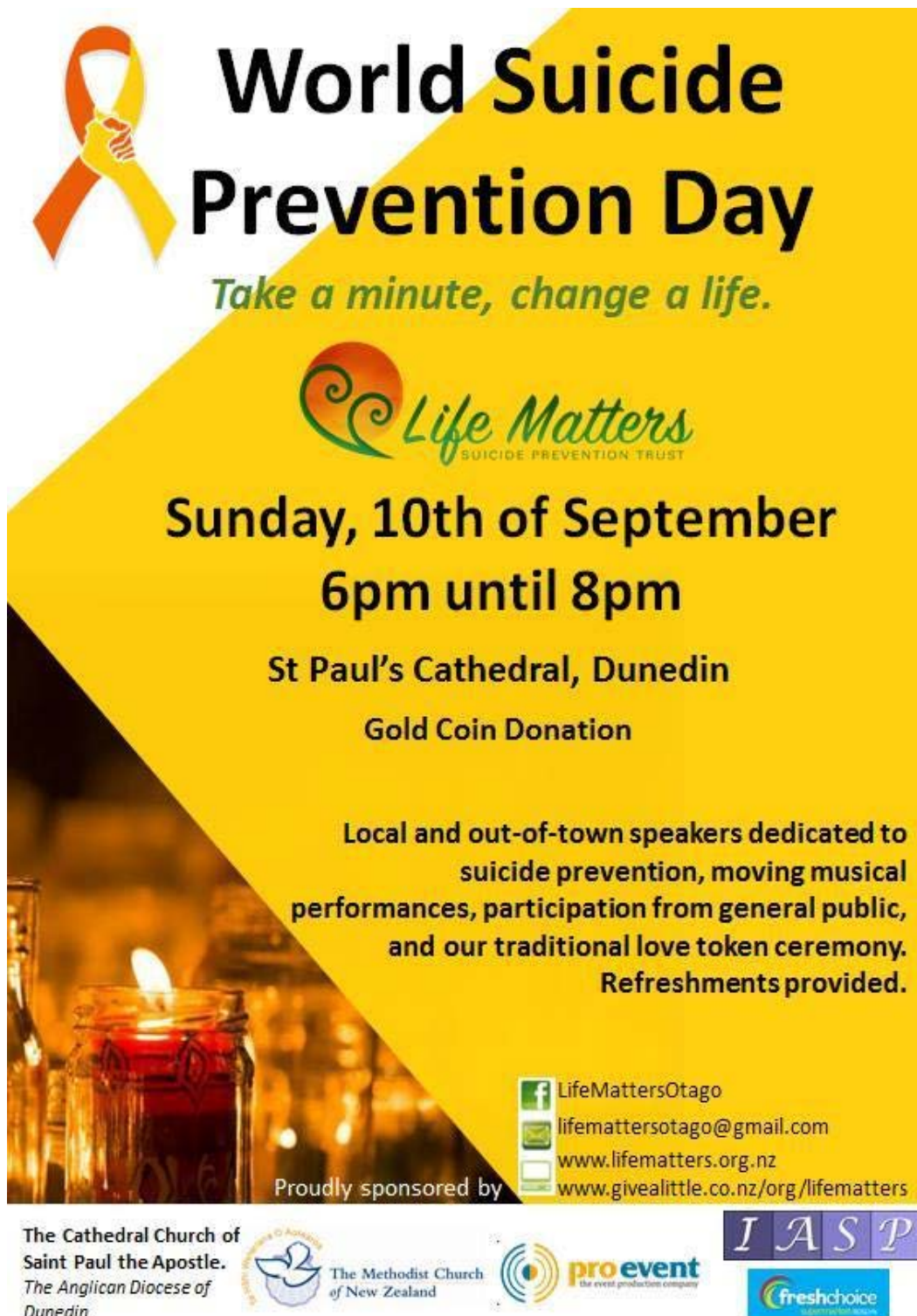
### WORSHIP FOR SUNDAY 17<sup>th</sup> September

9.30 am	Mornington	R Mitchell
10.00 am	Mosgiel	M Falloon (Pulpit swap)
11.00 am	Glenaven	R Mitchell
1.00 pm	St Kilda	TBA

### OPEN EDUCATION

What is going on in the world of peace studies? Otago University boasts one of the few world centres for the study of conflict resolution and the achievement of political peace. Come to Mornington Methodist Church, Galloway Street, on Wednesday 20 September, at 7.30 to hear from three post-graduate students about their researches in this area, crucial if we are to discover ways out of living forever in perpetual and bitter conflict. Your attendance will show that you care and want to

support such fundamental independent study. A koha of \$5. This session will be preceded by the usual tasty meal offered at 6pm by Judy Russell. Sign in for this meal (\$15) at the church, or ring and let Judy know you are coming (455 3727).



**World Suicide Prevention Day**

*Take a minute, change a life.*

**Life Matters**  
SUICIDE PREVENTION TRUST

**Sunday, 10th of September**  
**6pm until 8pm**

**St Paul's Cathedral, Dunedin**  
**Gold Coin Donation**

Local and out-of-town speakers dedicated to  
suicide prevention, moving musical  
performances, participation from general public,  
and our traditional love token ceremony.  
**Refreshments provided.**

Proudly sponsored by

LifeMattersOtago  
lifemattersotago@gmail.com  
www.lifematters.org.nz  
www.givealittle.co.nz/org/lifematters

The Cathedral Church of  
Saint Paul the Apostle.  
The Anglican Diocese of  
Dunedin

The Methodist Church  
of New Zealand

proevent  
the event production company

I A S P

freshchoice  
supermarket

**A VERY GOOD CROWD** of 50-plus were enthralled by Palestinian woman, MAI TAMIMI, speaking of life as a wife, a mother and a professional person under Israeli occupation. Perhaps the most valued learning from Mai's eloquent address is that despite all the well publicised dangerous aspects of life for Palestinian people, the majority must fashion a "normal" existence, raising their families, earning a living, and pursuing their interests. This means coming to terms with the harsh conditions imposed by their Israeli overlords and making the best use of life's opportunities, however limited. Mai herself works for United Nations and is constantly employed in the work of supporting Palestinian women.



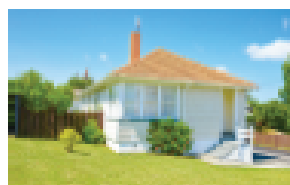
The family's links with Dunedin and the University are important - "a second home" as she described it, and with two of their family engaged in university study, they have promised to return. Tributes were paid to Colin and Jeanette for hospitality and to Greg and Hilda for ongoing support. Photo: The Tamimi family, Mai, with daughter Malak and husband Nasser.

**It's good to vote! Enroll!**

Vote for what is good for you and Aotearoa New Zealand

**Topics for GOOD VOTING - election 23 Sept 2017**

**WARM DRY  
AFFORDABLE  
HOMES**



**FAIR  
INCOMES**



**CHILDREN AND  
FAMILIES**



**CLEAN  
WATER &  
CLIMATE  
JUSTICE**



# Open Lecture



Dunedin Abrahamic Interfaith Group and Otago Tertiary Chaplaincy

## **14<sup>th</sup> Annual Open Peace Lecture**

# Healing, transformation and non-violence: Peace-making in the Holy Land

Dr Sami Awad, Holy Land Trust, Bethlehem | [HOLYLANDTRUST.ORG](http://HOLYLANDTRUST.ORG)

To be introduced by:

Professor Harlene Hayne, Vice-Chancellor, University of Otago

St David Lecture Theatre

Monday 11 September

6:15pm - 7:30pm

Supper to follow at All Saints' Anglican Church Hall, 786 Cumberland St.







*Client Support Worker: Pania:* Tony was referred to the service requiring support to deal with other services and organisations. The referral said Tony was aggressive and intimidating and this impacted the way in which services dealt with him. After contacting Tony and visiting him in his home, it became clear the aggression was merely his frustration of not being heard and not feeling like he was being taken seriously. Tony stated he had been trying to get ACC to reimburse him for travel and to book another specialist appointment as his injury needed reviewing. Tony had been on ACC's case for a couple of months and was having no success.

As we met and talked about Tony's issues, we discussed ways he could manage himself better when dealing with services i.e. understanding how his frustration can be misconstrued and how this could be seen as being aggressive. Tony could see how this could happen but felt powerless regardless.



Tony was happy for me to go with him to his ACC meeting to support. We discussed strategies and Tony was reminded he needed to keep his cool in order to have a positive outcome. Before the meeting Tony was very mindful of what we talked about and this was evident

throughout the appointment as Tony would look at me at times of frustration, and this helped him to refocus. The meeting proved to be successful for both Tony and the 2 ACC staff as Tony left the meeting feeling heard and acknowledged.

Later that day Tony messaged me stating he had heard back from ACC - he had been reimbursed for travel and was given an appointment for a specialist before the end of the month. Tony was very pleased with the outcome.

**If you would like to support the Mission's work with a donation, please visit [www.givealittle.co.nz](http://www.givealittle.co.nz) and search for The Methodist Mission.**

**PULPIT SWAP FOR TAIERI CHURCHES** - Sunday the 17<sup>th</sup> of September:  
Rev Malcolm Fallon (Anglican) at Mosgiel Methodist Church  
Rev Siosifa Pole (Methodist) at the Salvation Army

**PRAYER REQUEST** - Please continue to pray for world peace as North Korea and USA continue to insult one another in their exchanging of words. May there be a peaceful solution in this time of hostility.



### **GOT YOUR GUMBOOTS?**

Last weekend the Green Party leaked a draft copy of the Ministry for the Environment's "Coastal Hazards and Climate Change" guidance for local government. The main hazards are sea level (and associated water table) rise, along with more fierce storms (storm surges, high winds etc).

But it's the sea level and water table rise that is going to do the greatest damage.

We shouldn't think the MfE will be terribly happy about the leak this close to the election, but reading the thing, it's easy to see why the Greens have done this.

The draft says that nationwide there are 43,680 homes at risk. For comparison, there were 10,000 homes that had to be demolished after the Canterbury earthquakes (although many, many more that needed repair).

There are another 24,490 buildings, 5 airports, 1,500 jetties and wharves, over 2,000 kms of road, and nearly 50kms of rail, also likely to be affected.

And – this is the big one – 133,265 people who will be affected by climate change impact on our coasts.

12,595 of those people live in Otago.

What they mean by affected is this: without mitigation, those people will be living either underwater or in permanently damp, cold, homes.

The cost of mitigation (or managed retreat, the eventual only possible solution) will be equal or greater to another Christchurch earthquake.

Billions, tens of billions. Perhaps more.

The MfE hopes to convince local authorities like the ORC that this is their problem, and the draft proposes a planning model to help them work on solving it.

Now, I'm not completely up on the financial arrangements for the stadium (and I don't want to be, please don't share), but the \$200+m cost there almost did the DCC in. We can't even keep the sea at St Kilda from eating the promenade!

Even if we could build coastal defences, river defences, and pumping stations that would do the job, the cost would be .... well, it would be astronomical. But at the same time, where on earth are 12,595 Dunedin people going to move house to? Who will bear the cost of losing the nearly 4,000 homes and sections that will be taken by the sea? Even at \$150,000 each, that's a total loss of \$600m. Who will build the new homes and with what money?

And that's just Otago.

But perhaps it is not so much the money at this stage, as it is about mobilising the people who live in the places likely to be affected. To hear what they know about the community they live in, the issues, the leaders, and most of all to get people talking and thinking and making choices so that this is something they have some agency in. MfE are strongly recommending wide canvassing of all who may be affected.

It's a conversation we need to start now, and it is a conversation we can all help get going.

You can see the report at:

[https://www.greens.org.nz/sites/default/files/CH\\_Guide\\_Draft4-webversion.pdf](https://www.greens.org.nz/sites/default/files/CH_Guide_Draft4-webversion.pdf)

**Laura Black**